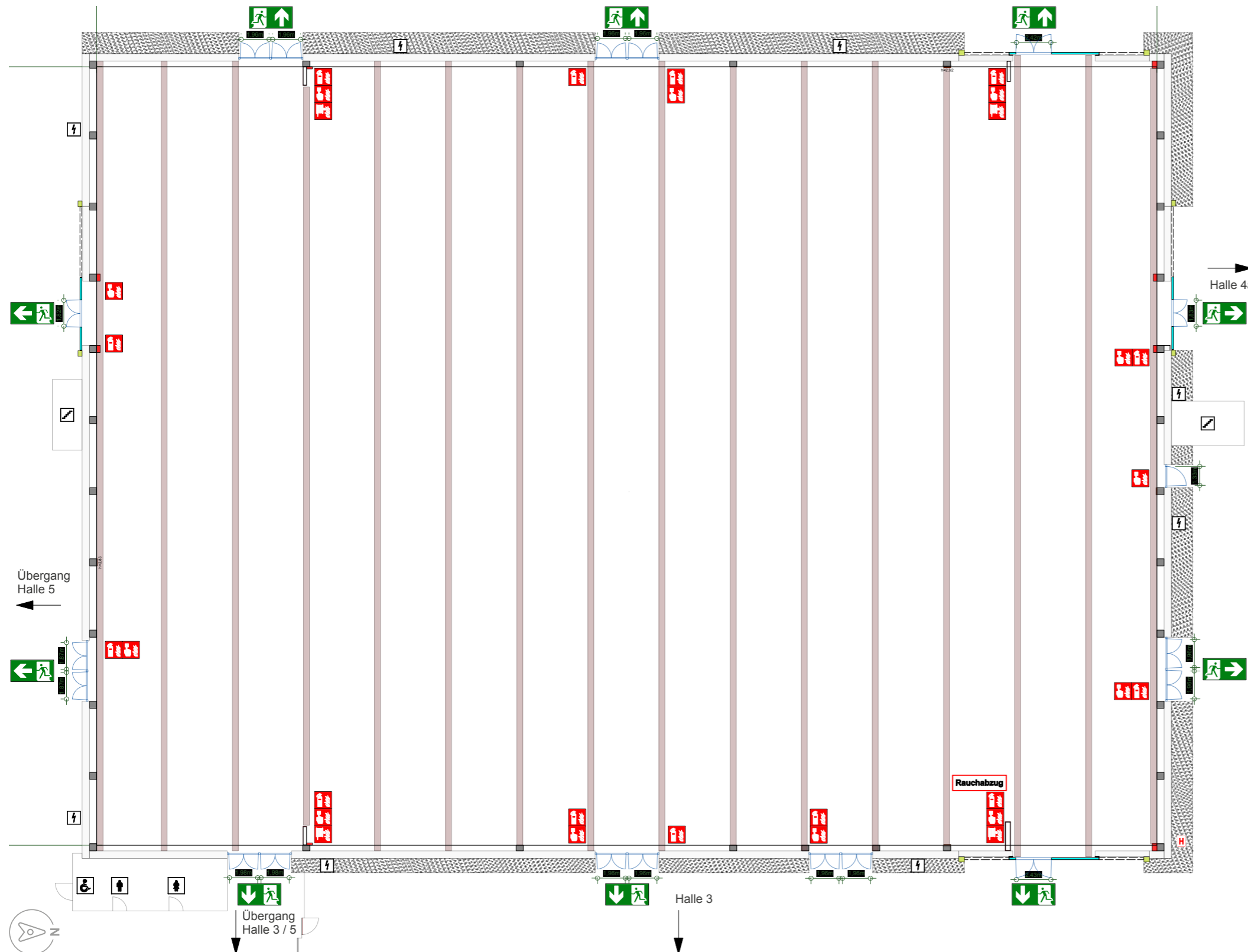






## Hall 4 Floor plan



Technical data	
Hall space	4,072.50 m <sup>2</sup> (net)
Hall dimensions	74.48 x 54.68 m
Usable height	7.33 m (lowest point)
Wheel load	3.30 t
Distributed load	10.00 t/m <sup>2</sup>
Ceiling load	500 kg/suspension point

Key	
	Fire extinguisher
	Wall hydrant
	Flue gas exhaust
	Supply ducts in the floor

