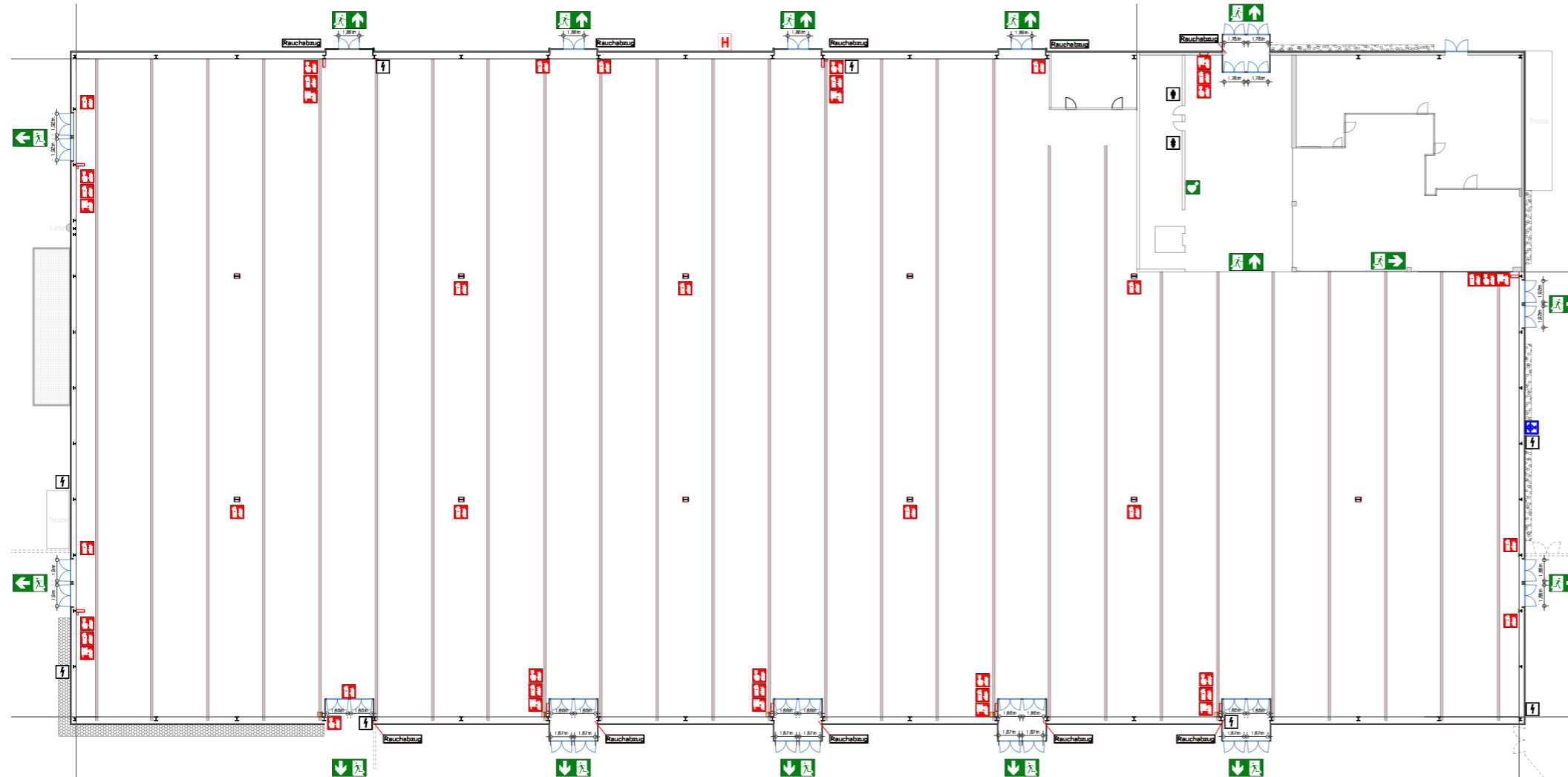






Halle 3 Hallenplan



Technische Daten	
Hallenfläche	7.628,00 m ² (brutto)
Hallenmaße	129,32 x 58,99 m
Lichte Nutzhöhe	7,00 m
Radlast	5,00 t
Flächenlast	1,67 t/m ²
Deckenlast	30 kg/Hängepunkt

Legende	
	Feuerlöscher
	Wandhydrant
	Rauchabzug
	Versorgungskanäle im Boden

